

# QUICK-FIT

## PRODUCT INSTALLATIONS

### Table of Contents

(click category links to jump)

<b>Categories</b>	<b>Page</b>
<a href="#"><u>Woodworking</u></a>	2-4
<a href="#"><u>Metalworking</u></a>	5-6
<a href="#"><u>Concrete</u></a>	7-9
<a href="#"><u>General Dust</u></a>	10-17
<a href="#"><u>Fume</u></a>	18-19
<a href="#"><u>Agriculture &amp; Food</u></a>	20-23
<a href="#"><u>Paper</u></a>	24-25
<a href="#"><u>Wet Applications</u></a>	26-28

Note: To print a range of pages in Acrobat Reader, check the appropriate pages number(s) to print in the print dialogue box. To print all pages check print all.

# Woodworking Dust Collection



## Quick-Fit Ducting

### JOB DETAILS:

Company: Architectural Graphics

Industry: Woodworking

Application: Wood dust collection

Machines Connected: numerous

Location: Savannah, GA

**Description of installation:** Nordfab Quick-Fit was used in dust collection. Nordfab original focus was the wood industry, we are still very focused and well known in this industry.

**QUICK-FIT™**



# Furniture Manufacturing Dust Collection



## Quick-Fit Ducting

### JOB DETAILS:

Company: Clean Air Sys for  
Renaissance Old World

Industry: Wood

Application: Custom  
Furniture

Machines Connected: 40

Location: Fresno, CA

**Description of installation:** Three separate buildings are connected for this project using a large cyclone collector. This picture is of the largest building with the most machines connected. Manufacturing high-end custom furniture and custom wood flooring.

**QUICK-FIT**™



# Boatbuilding Dust Collection



## Quick-Fit Ducting

### JOB DETAILS:

Company: Four Winns

Industry: Boatbuilding

Application: Dust  
collection

Location: Michigan

Materials Conveyed: Wood

**Description of installation:** Nordfab Quick-Fit was installed on this 10,000+ cfm system entirely by the maintenance staff of Four Winns. They used the Gripple suspension system to hang the entire system.

**QUICK-FIT™**



# Special Dust Collector Transitions



## Quick-Fit Ducting

### JOB DETAILS:

Industry: Metal parts  
machining

Location: Ohio

Material Conveyed: Metal  
fines

Machines Connected:  
Grinders and dust collector

**Description of installation:** Nordfab fabricated all the inlet and outlet transitions to perfectly match the dust collector. Nordfab Quick-Fit made the installation a snap.

**QUICK-FIT™**



# General Metalworking



## Quick-Fit Ducting

### JOB DETAILS:

Industry: Metal Parts  
Fabrication

Location: Ohio

Materials Conveyed: Fume,  
metal fines

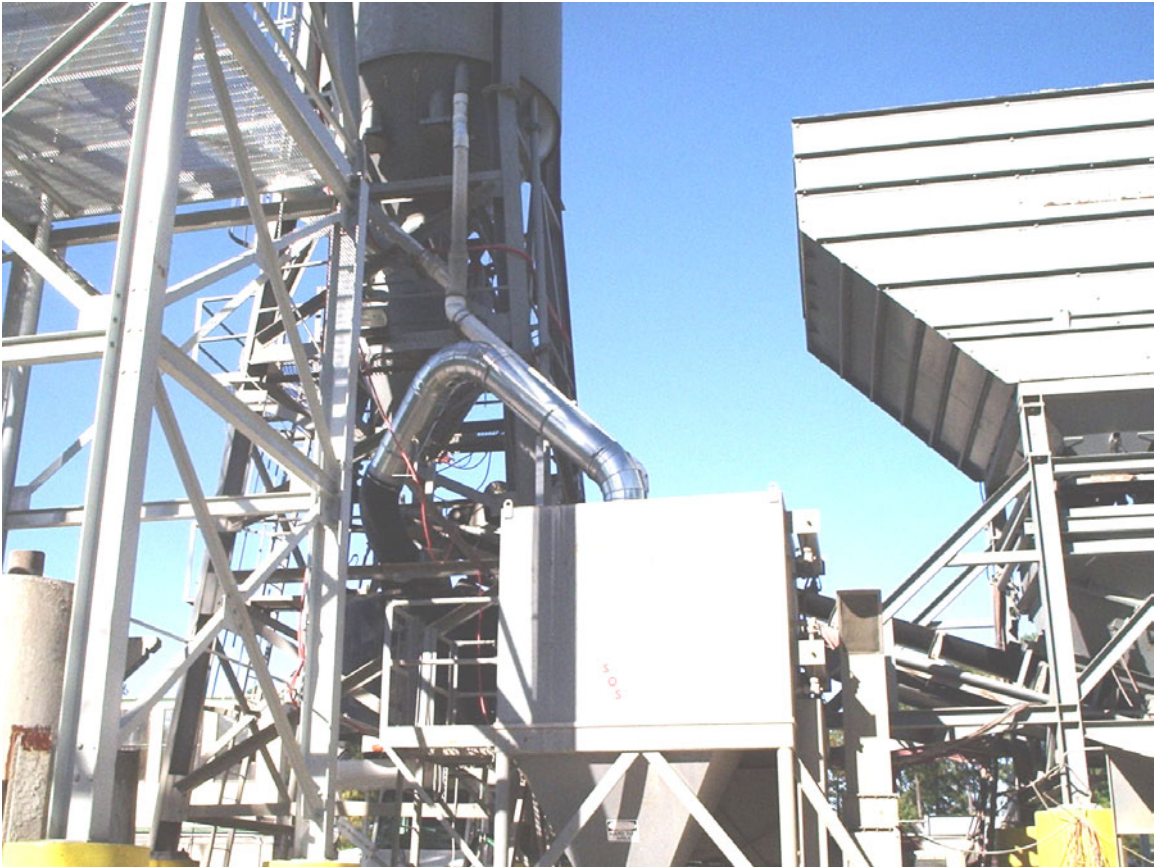
Machines Connected: Multiple  
fume hoods and grinders

**Description of installation:** Nordfab Quick-Fit ducting on 17-drop system. Frequent changes in equipment location made Quick-Fit the ideal choice.

**QUICK-FIT™**



# Concrete Batch Plant Dust Collection



## Quick-Fit Ducting

### JOB DETAILS:

Company: Turner Concrete  
Industry: Concrete  
Application: Dry concrete  
Machines Connected: N/A  
Location: Covington, GA

**Description of installation:** Nordfab Quick-Fit was used for dust control in concrete batch plants. This shows connection to a Stephens manufactures collector.

**QUICK-FIT™**



# Concrete Batch Plants



## Quick-Fit Ducting

### JOB DETAILS:

Company: Lafarge Building Materials

Industry: Concrete

Application: Dust collection for  
batch plants

Location: Winder, GA

**Description of installation:** Nordfab Quick-Fit was used for dust control in concrete batch plants. This is one of many installations for batch plants Lafarge has mandated use of Nordfab solely in their batch plants. C & W is a stocking distributor for Nordfab and now McNeilus is an authorized dealer.

**QUICK-FIT™**





## Concrete Dust Collection



### Quick-Fit Ducting

#### JOB DETAILS:

Company: Ready Mix USA

Industry: Concrete

Application: Batch plant dust collection

Machines Connected: N/A

Location: Rome, GA

**Description of installation:** Nordfab Quick-Fit was used for dust control in concrete batch plants. This is one of the many plants where Ready Mix used Nordfab. Ready Mix USA was acquired by LaFarge earlier this year.

**QUICK-FIT™**



# Recycling Equipment



## Quick-Fit Ducting

### JOB DETAILS:

Company: Recycling Equipment

Industry: Recycling

Application: Dust from recycling processes

Machines Connected: 10

Location: Eastern US

**Description of installation:** Nordfab Quick-Fit ducting has been connected to a variety of machines and separators for the waste and reclaimed product. Use of Quick-Fit greatly speeds installation and looks great.

**QUICK-FIT**™



# Recycling Equipment



## Quick-Fit Ducting

### JOB DETAILS:

Company: Recycling  
Equipment

Industry: Recycling

Application: Dust from  
separators

Machines Connected: 4

Location: Eastern US

**Description of installation:** Nordfab Quick-Fit ducting has been connected to a variety of machines and separators for the waste and reclaimed product. Use of Quick-Fit greatly speeds installation and looks great.

**QUICK-FIT**™



# Plastic Dust Extraction After Cutting



## Quick-Fit Ducting

### JOB DETAILS:

Company: Effective Air Sys  
for Laid Plastics

Industry: Plastic processing

Application: Plastic cutting

Machines Connected: 1

Location: Sacramento, CA

**Description of installation:** Nordfab Quick-Fit was used in processing large plastic blocks into various shapes and sizes based on custom orders.

**QUICK-FIT™**



# Plastic Cutting, Grinding & Shaping



## Quick-Fit Ducting

### JOB DETAILS:

Company: CB Tool for  
Stephenson, Inc.  
Industry: Commercial Plastic  
Application: Plastics  
Processing  
Machines Connected: 9  
Location: Santa Clara, CA

**Description of installation:** Plastic cutting, grinding and shaping facility. Process block plastics and sheet plastics. Photo taken during installation process. Gripple hangers used throughout entire installation.

**QUICK-FIT™**



# Textile Fiber Dust Collection



## Quick-Fit Ducting

### JOB DETAILS:

Company: WeavaClean

Industry: Textile

Application: Fiber dust collection

Location: Fall River, MA

**Description of installation:** Nordfab Quick-Fit was used for dust control in weaving applications at Quaker Fabric Corp. This is the first in conjunction with the WeavaClean units, but has a large potential nationally as well as internationally.

**QUICK-FIT™**



# Lime Processing in the Mining Industry



## Quick-Fit Ducting

### JOB DETAILS:

Company: Camtec

Industry: Mining

Application: Lime Processing

Machines Connected: 3

Location: Salt Lake City,  
Utah

**Description of installation:** Collection station to off load rail cars into a silo. Then product is transferred to loading trucks that are on a truck scale to be weighed while filling.

**QUICK-FIT™**



# Bulk Powder Blending Operation



## Quick-Fit Ducting

### JOB DETAILS:

Industry: Adhesives

Application: Mixing powders

Machines Connected: 4

Location: Central Ohio

**Description of installation:** Nordfab Quick-Fit was used for large mixer blending dry powders used in batching dry process adhesives.

**QUICK-FIT™**





# Coffee Roaster Exhaust



## Quick-Fit Ducting

### JOB DETAILS:

Company: Ambex New Harmony

Industry: Coffee Roasting

Application: Fume, vapor and heat extraction

Machines Connected: Two ports, one machine

Location: Clearwater, FL

**Description of installation:** Nordfab Quick-Fit was used for fume and heat extraction on coffee roasters. The clamp-together product allows for easy cleaning, which is very important in the coffee roasting industry due to very sticky buildup.

**QUICK-FIT™**



## Vehicle Fume Exhaust



## Quick-Fit Ducting

### JOB DETAILS:

Company: Las Vegas Fire  
Department  
Industry: Vehicle exhaust  
extraction  
Application: Fume  
Machines Connected: Various  
Location: Las Vegas, NV

**Description of installation:** Nordfab Quick-Fit was used on vehicle exhaust extraction by Plymovent in firehouses across the country. There are additional applications where Nordfab is used at automobile dealerships service centers.

**QUICK-FIT™**



# Automotive Weld Fume Extraction



## Quick-Fit Ducting

### JOB DETAILS:

Company: Air Purification  
Systems for Freightliner

Industry:

Automotive/Transportation

Application: Weld fume  
extraction

Machines Connected: 6

Location: Mount Holly, NC

**Description of installation:** Nordfab Quick-Fit was installed to welding stations within the plant .

**QUICK-FIT™**



# Tomato Processing Plant



## Quick-Fit Ducting

### JOB DETAILS:

Company: Effective Air  
Industry: Agricultural  
Application: Tomato  
processing  
Machines Connected: N/A  
Location: Sacramento, CA

**Description of installation:** Positive blow off pressure using Nordfab wet gaskets. 50 water inches of positive pressure used to dry cans for tomato paste and tomato sauce canning process.

**QUICK-FIT™**



# Spice & Seasonings Blending



## Quick-Fit Ducting

### JOB DETAILS:

Industry: Food

Location: Ohio

Materials Conveyed: Spices,  
cornmeal and flour

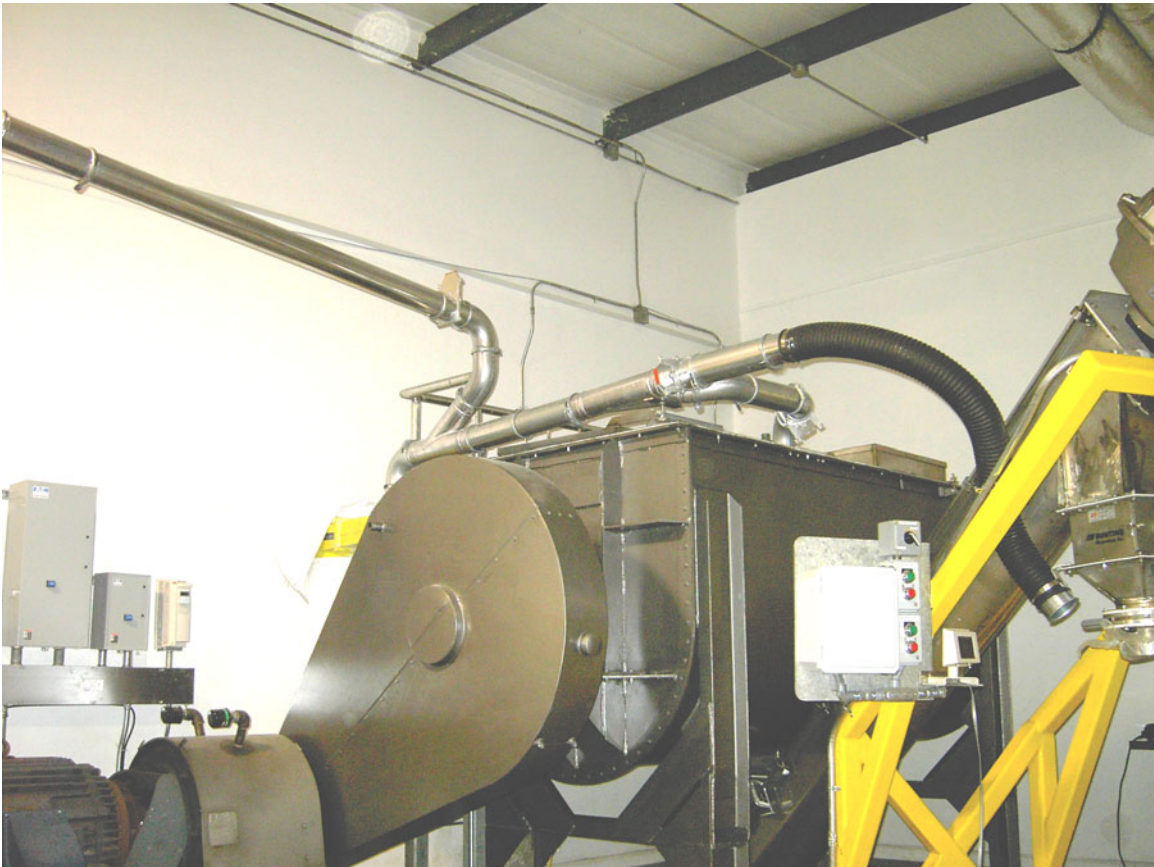
Machines Connected: Ribbon  
blenders and packaging  
machines

**Description of installation:** Nordfab Quick-Fit was used for collection of spice and seasoning powders from mixing and packaging line.

**QUICK-FIT™**



# Sweetener Blending



## Quick-Fit Ducting

### JOB DETAILS:

Company: Sweetener Solutions  
Industry: Artificial sweetener  
Application: Dust extraction  
during blending  
Machines Connected: 1  
Location: Macon, GA

**Description of installation:** Nordfab Quick-Fit was used for dust extraction on commercial blending machines for artificial sweetener. One of the main reasons the customer chose Nordfab was because the ease of cleaning.

**QUICK-FIT™**



# Morris Seed Company Dust Collection



## Quick-Fit Ducting

### JOB DETAILS:

Company: Effective Air

Industry: Seed

Application: Dust collection

Machines Connected: 5

Location: Modesto, CA

### Description of installation:

Dust collection for dumping stations. Dust collection for filling stations

**QUICK-FIT™**



# Paper Trim Collection



## Quick-Fit Ducting

### JOB DETAILS:

Company: Wastestream

Industry: Paper

Application: Paper trim collection

Machines Connected: 6

Location: Hayward, CA

**Description of installation:** Nordfab Quick-Fit was used for custom floor sweep for larger paper trim.

**QUICK-FIT™**





# Paper Trim Collection



## Quick-Fit Ducting

### JOB DETAILS:

Company: Wastestream for Cal  
Sheets

Industry: Paper

Application: Paper trim  
collection

Machines Connected: 5

Location: Stockton, CA

**Description of installation:** Nordfab Quick-Fit was used for collecting paper trim off of corrugators. Corrugate to form into folds or ridges and grooves

**QUICK-FIT™**



# Condensation Control



## Quick-Fit Ducting

### JOB DETAILS:

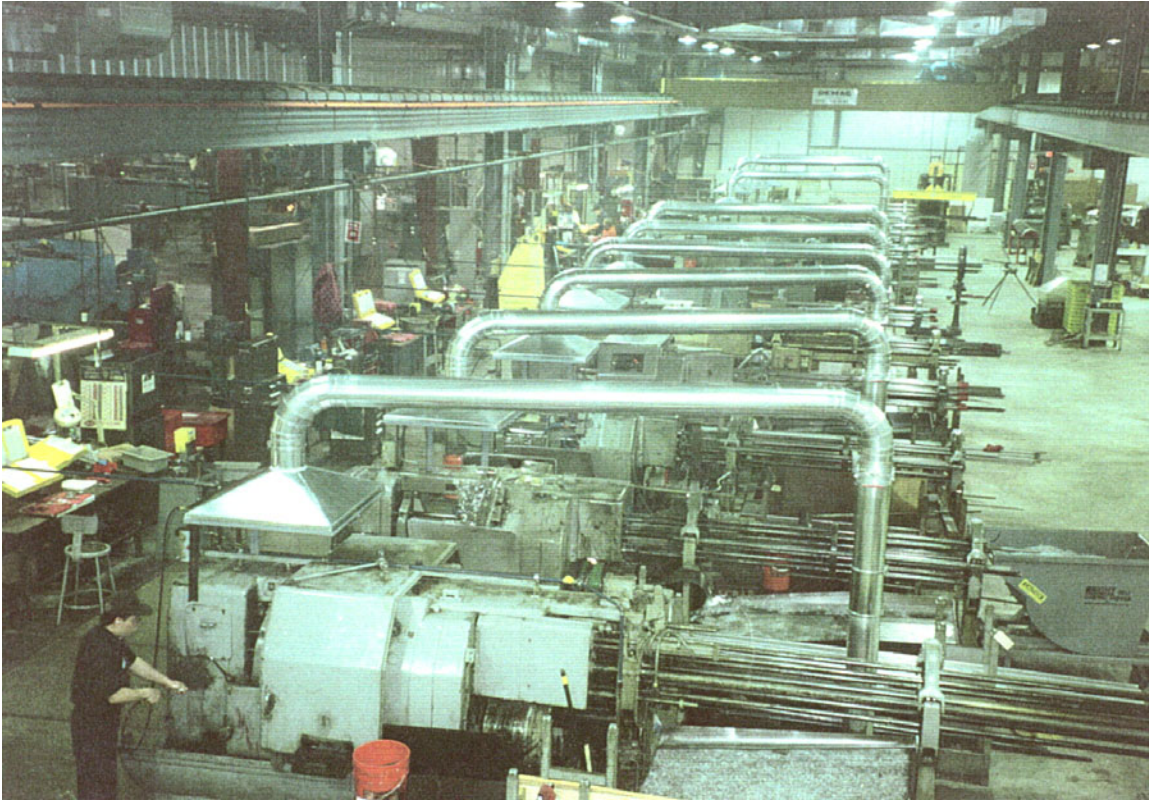
Company: Claxton Poultry  
Industry: Poultry  
Application: Condensation control  
Machines Connected: 16  
Location: Claxton, GA

**Description of installation:** Nordfab Quick-Fit was used for condensation control in a poultry processing plant. This is the first system of its kind. The specifying engineer requested the duct be filled with 2" of water and there were NO leaks.

**QUICK-FIT™**



# Oil Mist Collection



## Quick-Fit Ducting

### JOB DETAILS:

Company: Seward Screw Products

Industry: Machining

Application: Oil mist collection for screw machines

Machines Connected: 29

Location: Chicago, IL

**Description of installation:** Nordfab Quick-Fit was used for oil mist collection from 29 screw machines. The main trunk was located below floor level.

**QUICK-FIT™**



# Oil Mist Collection



## Quick-Fit Ducting

### JOB DETAILS:

Company: Ideal Stant  
Industry: Worm Gear Clamp  
Mfg.  
Application: Oil mist  
collection  
Machines Connected: 10+  
Location: Jacksonville, FL

**Description of installation:** Nordfab Quick-Fit was used for oil mist in collection in metal machining for worm gear clamps. Ideal is the largest manufacturer of worm gear clamps. The facility was very clean with no leaks after several years.

**QUICK-FIT™**

